

# Savy Ville de

*freedom redefined*



**1, 2 & 3 BHK Apartments**

Raj Nagar Extn. NH-58, Ghaziabad

# PROJECT PROFILE

When it comes to Realty, its not the name, its Delivery. After having a history of successfully delivering projects in Dehradun and Jalandhar, Ascent has now also made a space in NCR. Ascent, being one of the oldest in Raj Nagar Extn. Has now delivered its 2 phases in their project Savy Ville de. It is our customers who praise about the quality and trust the name. our Customers, is our branding.

Ascent Group is reputed & well established and having 20 years of experience in Construction Industry. The Company is a group of enterprising professionals Committed to Specialization, with an over all philosophy based on quality and speedy execution of project and of course economically.

The company is constructing deluxe residential flats, commercial complexes and independent sites in Delhi NCR under the Leadership of qualified and experienced personnel. Mr. Suresh Gogia, MD who himself have an intention to construct beautiful, deluxe, independent residential flats with natural light, cross ventilation by following vastu, with beautiful landscapes, greenery and excellent elevations.

Group offers you a wide variety of homes that match your needs. Our projects are tastefully designed to suit your requirements. Customers are assured of our total commitment to bring projects to completion maintaining the objectives of timely delivery, high efficiency and optimized costs.

## PROJECT FEATURES

- Vastu Oriented
- Gymnasium
- Earthquake Resistant Structure
- Swimming Pool
- Eco Friendly
- Easy Approachability
- Dedicated Parking Space
- Tropical Garden
- Badminton Court
- Game Zone
- High Speed Elevators
- Ample Power Backup
- Landscaped Gardens
- Library
- Exclusive Club House
- Yoga & Meditation

*Savy  
Ville de*  
*freedom redefined*



**1, 2 & 3 BHK Apartments**

Raj Nagar Extn. NH-58, Ghaziabad

# PROJECT SPECIFICATIONS

*Savy  
Ville de*  
freedom redefined



Description	Flooring & Skirting	External Windows	Wood	Walls	Internal Doors	Ceiling
• Drawing Room	• Vitrified Tiles	• Aluminum	• N.A.	• Oil Bound Distemper	• Flush Door Shutter, best quality hardware	• Oil Bound Distemper R.O.P Cornices
• Dinning Room	• Vitrified Tiles	• Aluminum	• N.A.	• Oil Bound Distemper	• Flush Door Shutter, best quality hardware	• Oil Bound Distemper R.O.P Cornices
• Bed Room	• Glazed Vitrified Tiles	• Aluminum	• N.A.	• Oil Bound Distemper	• Flush Door Shutters	• Oil Bound Distemper R.O.P Cornices
• Master Bed Room	• Glazed Vitrified Tile	• Aluminum	• N.A.	• Oil Bound Distemper	• Flush Door Shutters	• Oil Bound Distemper R.O.P Cornices
• Toilets	• Anti-Skid Ceramic	• Aluminum	• N.A.	• Ceramic Tiles upto 7 feet	• Flush Door Shutters	• Oil Bound Distemper False Ceiling
• Kitchen	• Tiles Ceramic Tiles	• Aluminum	• Semi Modular Kitchen*	• Ceramic Tiles upto 2 feet above granite counter & Oil Bound Distemper	• Flush Door Shutters	• Oil Bound Distemper False Ceiling
• Lobbies	• Vitrified Tiles	• N.A.	• N.A.	• Oil Bound Distemper	• N.A.	• Oil Bound Distemper False Ceiling
• Lift Lobbies	• Designer Marble	• Aluminum	• N.A.	• Oil Bound Distemper	• N.A.	• Oil Bound Distemper False Ceiling
• Staircase	• Marble Flooring	• N.A.	• N.A.	• M.S. Hollow steel section/Wooden handrail & enamel paint (Oil Bound Distemper on wall)	• N.A.	• Oil Bound Distemper
• Balconies	• Ceramic Tiles	• N.A.	• N.A.	• Oil Bound Distemper/Apex/Railing hollow steel section in design	• N.A.	• Oil Bound Distemper

# FLOOR PLANS

**SUPER AREA - 985 Sq. Ft.**  
2BHK + 2Toilet

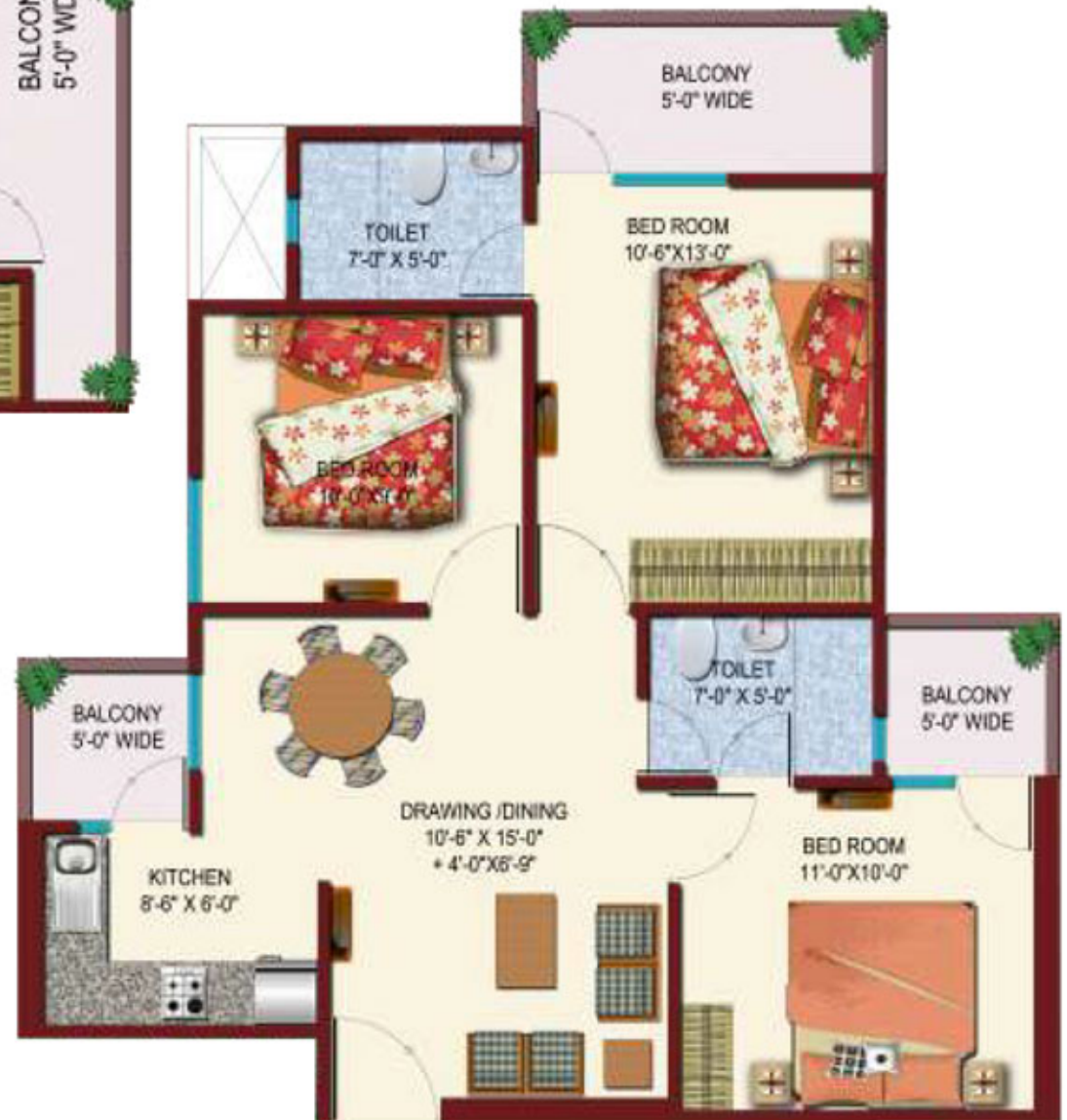


**SUPER AREA - 1108 Sq. Ft.**  
2BHK + 2Toilet + Kid's Room

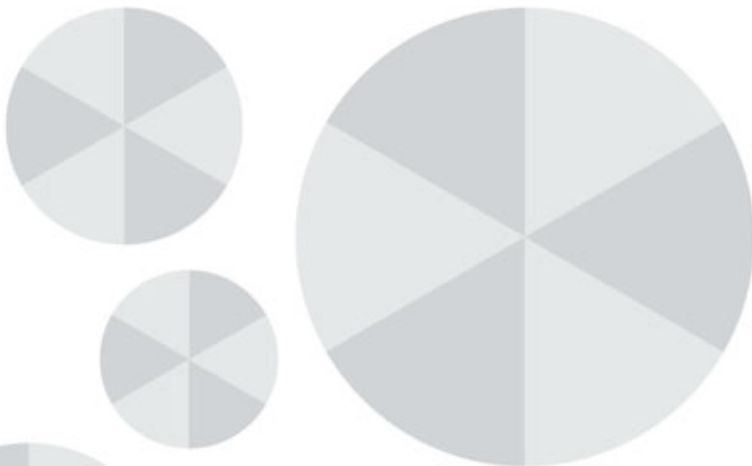
**SUPER AREA - 1144 Sq. Ft.**  
 2BHK + 2Toilet + Store Room



*Savy*  
*Ville de*  
*freedom redefined*



**SUPER AREA - 1165 Sq. Ft.**  
 3BHK + 2Toilet



# FLOOR PLANS



**SUPER AREA - 1526 Sq. Ft.**  
2BHK + 3Toilet + Kid's Room



# FLOORPLAN

**SUPER AREA - 1530 Sq. Ft.**  
3BHK + 2Toilet







# SITE PLAN

*Savy*  
*Ville de*  
*freedom redefined*



# Location Plan

Member of

**CREDAI**  
 Confederation of Real Estate Developers' Associations of India




Corporate Office : Ascent House, D-43, Sector-6, Noida-201 301 (U.P.)  
 Site Office : NH-58, 6 Lane Expressway, Rajnagar Ext., Ghaziabad (U.P.)  
 Phone : +91-120-3052020, 3258912, 3258913. Fax : 0120-2423998, 2424801

E-mail : info@ascentlimited.com, www.ascentlimited.com

SMS "ascent" to 53030

Our Bankers :



